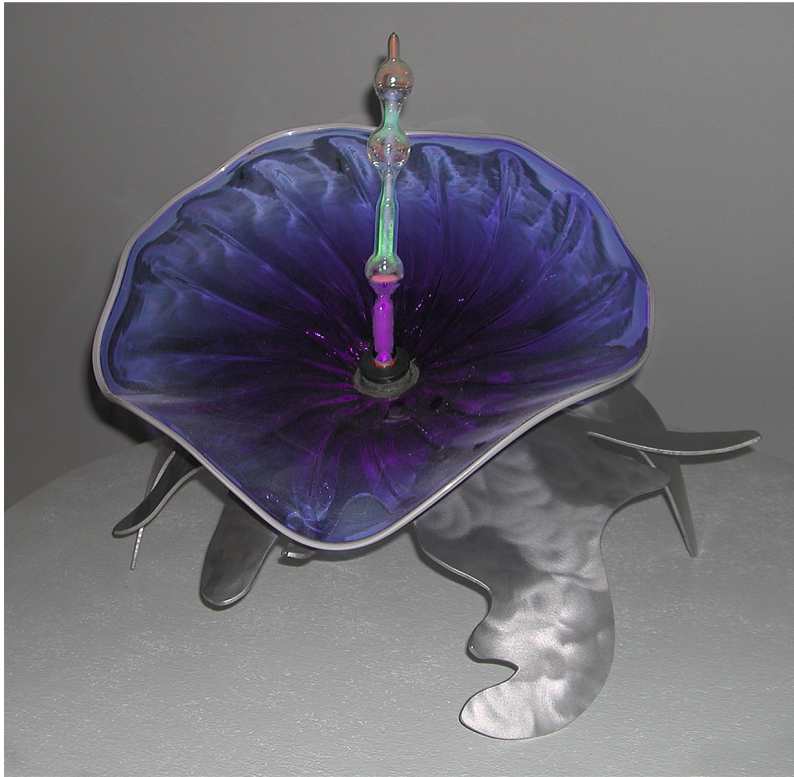


EHLENBERGER



Swamp Lotus I



Swamp Lotus II

VENUSIAN SWAMP LOTUS SERIES

glass, neon, aluminum base

The "Swamp Lotus," like the "Swamp Flower," is made up of elegant hand-blown glass forms with hand-blown neon tubes emerging from the center. Completely interchangeable, each element of the "Swamp Lotus" is unique to the sculpture: the neon unit, the glass component and the aluminum base. The neon tubes are delicately highlighted with multicolored phosphors creating subtle hints of luminescent color.